

Cascade-Siskiyou National Monument

Bureau of Land Management, Medford, Oregon

Ecology Program



CSNM Volunteer and Citizen Science Program

A Collaborative Program with the Friends of Cascade-Siskiyou National Monument



Oak Woodland of CSNM

Introduction

This program is a collaborative effort between the *Cascade-Siskiyou National Monument (CSNM)* and the *Friends of the Cascade-Siskiyou National Monument*. This is a description of the types of volunteer and citizen science opportunities at the CSNM.

There are numerous concurrent and ongoing ecology projects at the CSNM. Charles Schelz, the Monument Ecologist, is in charge of these projects and coordinates volunteer and citizen science activities. The job of the ecologist is like ecology in that it is complex with many inter-connecting parts.



Great Gray Owl in CSNM

Volunteers have numerous opportunities limited only by their ability to put in the time. We are always looking for detail-oriented and committed folks, and usually there is a need available that can be tailored to your interests.

The CSNM is committed to supporting all volunteers and citizen scientists as much as possible. We can supply most of the equipment and materials needed, but we ask that you have your own transportation or arrange car pools with other volunteers if possible. With COVID still here, we need to be especially cautious about following appropriate precautions especially with transportation, training, and working too closely with others.

Volunteer Program Mission

To empower community members through training and support to contribute to the preservation of the biodiversity of the Cascade-Siskiyou National Monument by participating in important projects within the Monument.

Volunteer Program Objectives

The volunteer program is aimed at supporting all levels of volunteer abilities and needs. The Monument Ecology Program has limited staff and ambitious goals. It can't all be done without help, especially help from volunteers, school groups, and citizen scientists. If you are willing to give your valuable time then we are committed to working with you and providing what you need to succeed. The following are the basic objectives of this program:



- To stimulate community interest, concern and support for the Monument.
- To provide an opportunity for interested community members to become involved directly with ecology projects in the Monument.
- To strengthen Monument-community relations through direct and positive participation.
- Matching appropriate CSNM projects with willing volunteers and citizen scientists.
- Providing training for all projects.
- Supporting volunteers with appropriate safety equipment and the tools and materials needed.

What Kinds of Projects?

There are many different types of projects, in general they are in one of the following categories:

- 1) **Inventory:** surveys to see what we have.
- 2) **Monitoring:** data collection to monitor how populations and other things are doing.
- 3) **Research:** collecting data for specific research projects.
- 4) **Restoration:** involving all aspects of restoration, including seed collection, seeding, planting,

Specific Projects

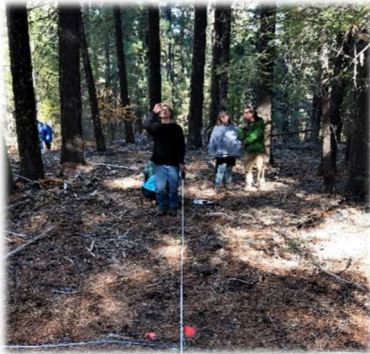
Projects listed below are ongoing and the need for volunteers can be on a regular basis, an on-call basis, or just for one time. The extent of your commitment is totally up to you. One special part of this program is the ability of a volunteer to adopt a plot or transect that they can come back to on their own year after year to collect data to document changes.

Inventory

1. Surveying and mapping the locations for rare plants and animals.
2. Mapping and measuring large trees.
3. Mapping and measuring large snags.
4. Placing and maintaining cameras for documenting wildlife activities.
5. Mapping wildlife trackways for determining major wildlife corridors.
6. Assist Xerces Society with searching for terrestrial mollusks.
7. Assist Southern Oregon University researchers with surveying for mushroom diversity.
8. Surveying and mapping the locations for invasive non-native plants.

Monitoring

1. Adopt a butterfly transect for monitoring butterfly populations from year to year.
2. Adopt a vegetation plot for monitoring butterfly populations from year to year.
3. Adopt a section of boundary fence to monitor for breaks and areas where downed trees have crushed the fence. This program is focused on preventing trespass cows and horses into the Monument.
4. Adopt a transect for documenting native bees and bumblebees in an area.
5. Monitor changes in stream morphology and vegetation at riparian restoration sites.
6. Collect vegetation data at long-term bird monitoring sites.
7. Manage temperature and humidity data loggers in the field and download for data management.
8. Work directly with collecting effectiveness monitoring data on the native grassland restoration project.



Collecting Data in a Vegetation Plot

Research

1. Assist with collecting data on the Brewer Oak Response to Wildfire Project. This is only done in May and June each year.
2. Develop your own research project.
3. Research ecological linkages in different plant communities throughout CSNM ecosystem.
4. Collect historic photos of areas within the monument for analyzing ecological changes over time. Use these historic photos to re-take new photos at the same spot.
5. Help with administering the acoustic monitoring program through placing recorders in specific areas and analyzing results.



Bumblebee in CSNM

Restoration

1. Assist with creating wildlife habitat at plantation restoration sites.
2. Assist with creating wildlife habitat at riparian restoration sites.
3. Assist with creating wildlife habitat at Wildland Urban Interface restoration sites.
4. Assist with planting native vegetation at various restoration sites.
5. Manually control and map invasive non-native plants at specific locations in the Monument.
6. Work with researchers on developing the best treatments for transforming non-native grasslands to native ecosystem.
7. Assist with protecting the imperiled Mardon Butterfly by helping with restoration and fence building activities.



Trout Lilly in CSNM

If you are Interested

If you are interested in volunteering at the Monument contact the Friends of the Cascade-Siskiyou National Monument at <https://www.cascadesiskiyou.org/>. We are interested with working with individuals, school groups, conservation organizations, etc. Another contact is the Monument Ecologist listed below.

All photos by: CSchelz

The Cascade-Siskiyou National Monument is designated to protect the areas biodiversity and biological connectivity.



For additional information contact:

Charles Schelz / Ecologist
cschelz@blm.gov